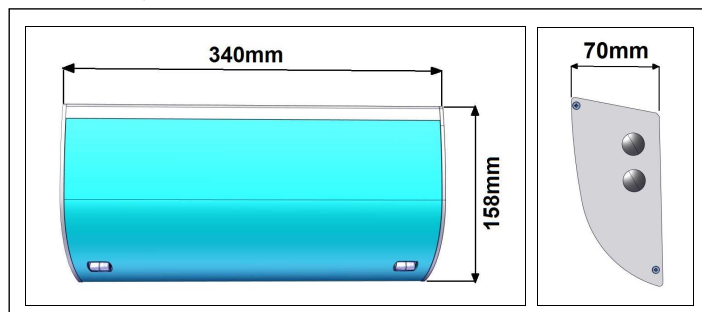


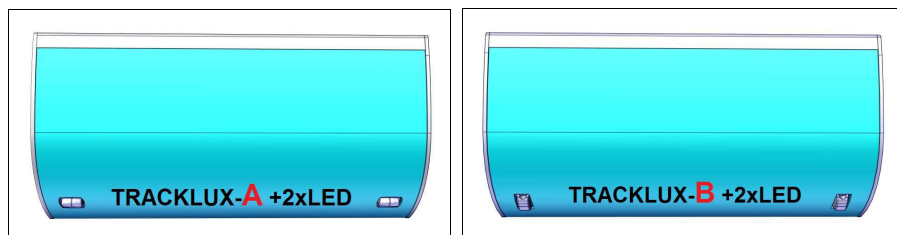
## INSTALLATION INSTRUCTION

### C.TRACKLUX-A/B+2xLED 230V AC/DC

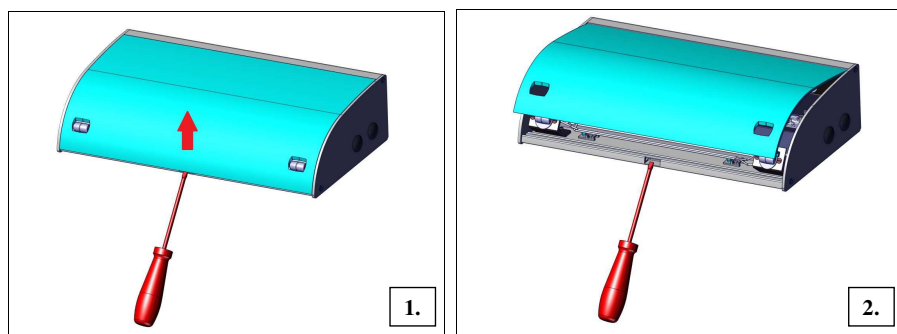
This luminaire is intended for emergency illuminance of escape ways and illuminance of the safety mark for the emergency escape ways (in administrative buildings, business centers, theatres, schools, hospitals, industrial objects etc.). The luminaire is suitable only for use in interiors.



#### VERSIONS

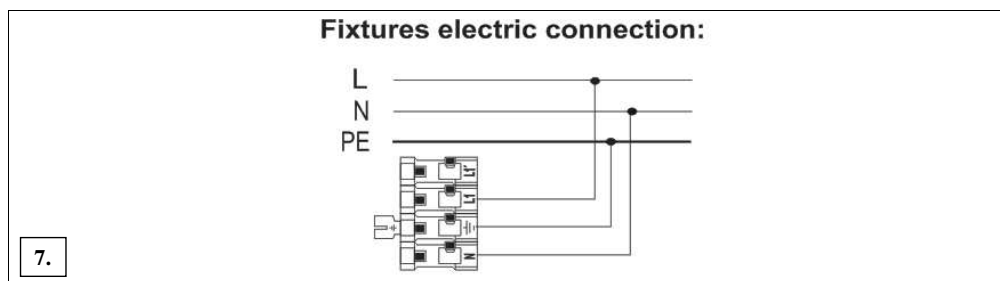
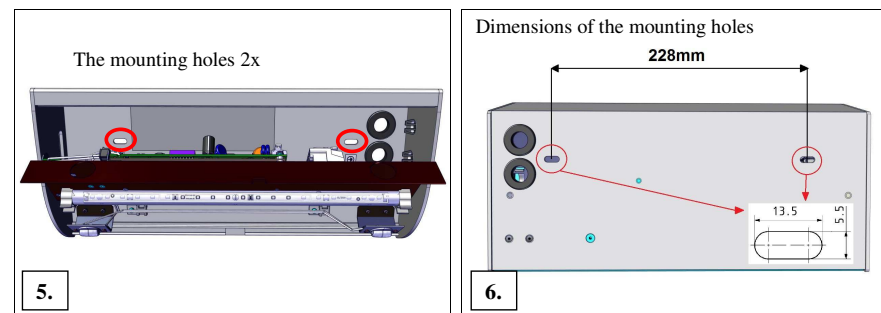
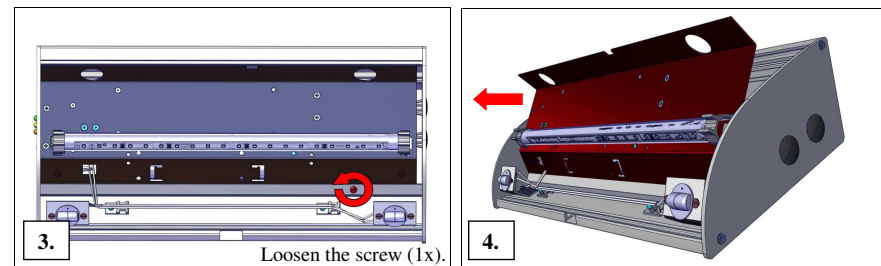


#### INSTALLING THE LUMINAIRE



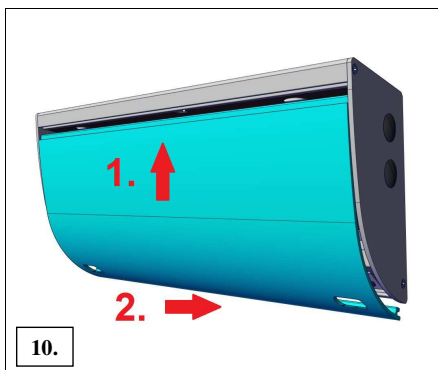
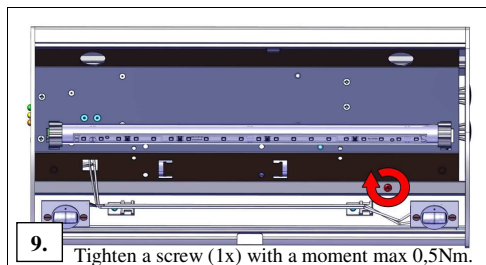
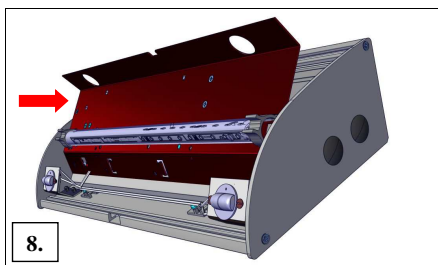
## INSTALLATION INSTRUCTION

### C.TRACKLUX-A/B+2xLED 230V AC/DC



## INSTALLATION INSTRUCTION

### C.TRACKLUX-A/B+2xLED 230V AC/DC



#### STANDARD FEATURES

Self-adhesive legends (use as needed).

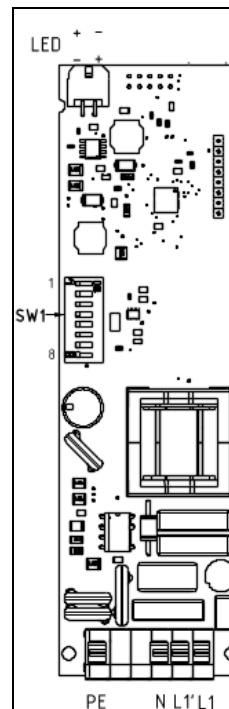


A symbol on the product or its packaging indicate that this product should not go into household waste. It must be taken to the collection point of an electric and electronic equipment recycling facility. By making sure this product is disposed of properly, you will help prevent the negative effects on the environment and human health that would otherwise result from inappropriate disposal of this product.

## INSTALLATION INSTRUCTION

### C.TRACKLUX-A/B+2xLED 230V AC/DC

#### SETUP OPTIONS EMERGENCY LUMINAIRE



Switch setting options SW1:

SW1	FUNCTION DESCRIPTION	POSITION	
		OFF	ON
1	Function of input L1'	DIMING control	2xLED's control
2	Setting of the light output in	See DIMMING TABLE	
3	DIMMING mode		
4			
5			
6			
7			
8	Input logick of L1'	POSITIVE	NEGATIVE

DIMMING TABLE:

		LIGHT OUTPUT
2	3	PICTOGRAM
OFF	OFF	100% (PF>0.9)
OFF	ON	50%
ON	OFF	25%
ON	ON	10% ECO MODE

NOTE: To activate the new switch settings you must disconnect the luminaire from Mains.