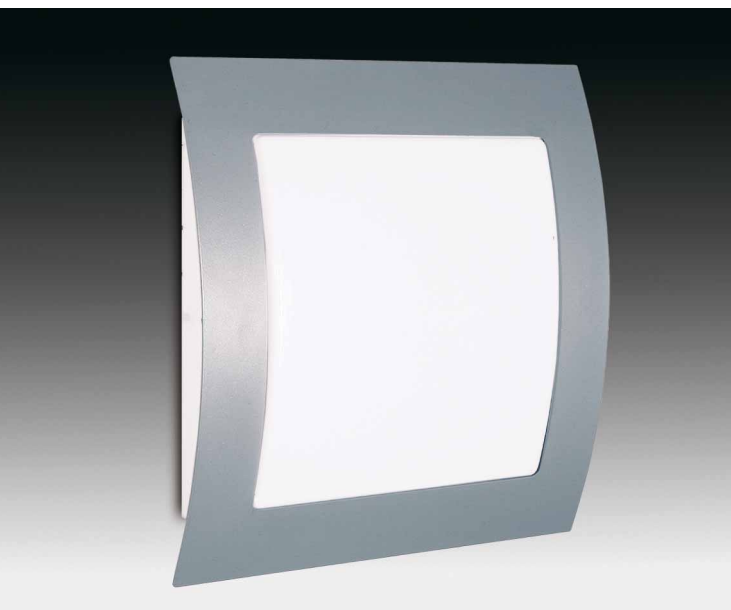




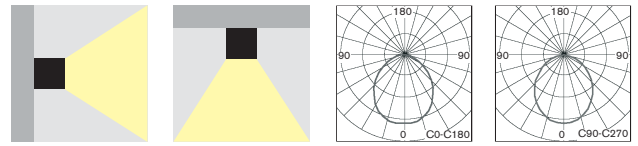


**MODULUX-A/-E**

MODULUX-A



MODULUX-E



- Exquisite design wall or ceiling mounted lighting fixture for smooth, powerful and comfortable direct illumination by fluorescent tubes
- Suitable for all representative areas, especially for offices, hotels, shops, exhibitions, banks or even modern residential areas
- Modern high quality materials:
  - body made of steel sheet painted in RAL9006
  - diffuser made of opal "milky" colour acrylic
  - diffuser made of opal "milky" colour polycarbonate PC (only for MODULUX-E)
- elegantné nástenné alebo stropné svietidlo s kombináciou príjemného, výkonného a komfortného priameho osvetlenia, určené pre žiarivky
- vhodné pre použitie pre moderné reprezentačné interiéry, hotely, výstavníky, banky, obchodné priestory, alebo aj pre moderné obytné priestory
- vysokokvalitné materiály:
  - teleso: lakovaný oceľový plech RAL9006
  - difúzor: opáľový PMMA
  - difúzor: opáľový polykarbonát PC (len pre verziu MODULUX-E)

**STANDARD FEATURES****ŠTANDARDNÁ VÝBAVA**

- High frequency warm-up ballast (valid only for EVG versions)
- Emergency lighting units (valid only for all MULTIMODULUX versions)
- vybavené elektronickým predradníkom s teplým štartom (platí pre EVG verzie)
- vybavené modulom núdzového osvetlenia (platí pre MULTIMODULUX verzie)

**OPTIONS****PRIPLATKY**

- Alternative surface treatment is possible (min.order quantity 100pcs)
- povrchová úprava svietidla podľa špecifikácie v RAL (min. 100ks)

**MODULUX-A/-E**

Type / Typ	A x B x C mm	Power:	Light Source	Ballast Type / Typ predradníka	Order Code	Weight
MODULUX-A-EP 2x9W	250 x 250 x 66 mm	230V AC/DC	2x9W / 2G7	Electronic Ballast / EVG	94-B-11	1,0 kg
MODULUX-A 2x9W RAL9003 *	250 x 250 x 66 mm	230V AC/DC	2x9W / 2G7	Magnetic Ballast / KVG	94-B-03-01-01	1,2 kg
MODULUX-A 2x18W	320 x 320 x 80 mm	230V AC	2x18W / 2G11	Magnetic Ballast / KVG	94-B-01	3,0 kg
MODULUX-A 2x18W RAL9003 *	320 x 320 x 80 mm	230V AC	2x18W / 2G11	Magnetic Ballast / KVG	94-B-01-01-01	3,0 kg
MODULUX-A-EP 2x18W	320 x 320 x 80 mm	230V AC/DC	2x18W / 2G11	Electronic Ballast / EVG	94-B-15	2,8 kg
MODULUX-A-EP 2x18W RAL9003 *	320 x 320 x 80 mm	230V AC/DC	2x18W / 2G11	Electronic Ballast / EVG	94-B-15-01-F1	2,8 kg
MODULUX-A-EP-DIM-10V 2x18W	320 x 320 x 80 mm	230V AC/DC	2x18W / 2G11	Electronic Dimmable 1-10V	94-B-96	2,8 kg
MODULUX-A-EP-DIM-DALI 2x18W	320 x 320 x 80 mm	230V AC/DC	2x18W / 2G11	Electronic Dimmable DALI	94-B-102	2,8 kg
MODULUX-A 2x36W	500 x 500 x 73 mm	230V AC	2x36W / 2G11	Magnetic Ballast / KVG	94-B-23	7,0 kg
MODULUX-A 2x36W RAL9003 *	500 x 500 x 73 mm	230V AC	2x36W / 2G11	Magnetic Ballast / KVG	94-B-23-01-F1	7,0 kg
MODULUX-A-EP 2x36W	500 x 500 x 73 mm	230V AC/DC	2x36W / 2G11	Electronic Ballast / EVG	94-B-34	6,5 kg
MODULUX-A-EP 2x36W RAL9003 *	500 x 500 x 73 mm	230V AC/DC	2x36W / 2G11	Electronic Ballast / EVG	94-B-34-01-F1	6,5 kg
MODULUX-A-EP-DIM-10V 2x36W	500 x 500 x 73 mm	230V AC/DC	2x36W / 2G11	Electronic Dimmable 1-10V	94-B-70	6,5 kg

\* RAL9003 = White colour surface treatment / povrchová úprava svietidla v bielej farbe



<b>MODULUX-A/-E</b>						
Type / Typ	A x B x C mm	Power:	Light Source	Ballast Type / Typ predradníka	Order Code	Weight
MULTIMODULUX-A-EP 2x18W/1h	320 x 320 x 80 mm	230V AC	2x18W / 2G11	EVG + Emergency 18W/1h	94-B-112	3,2 kg
MULTIMODULUX-A-EP 2x18W/1h RAL9003 *	320 x 320 x 80 mm	230V AC	2x18W / 2G11	EVG + Emergency 18W/1h	94-B-112-02	3,2 kg
MULTIMODULUX-A-EP 2x36W/1h	500 x 500 x 73 mm	230V AC	2x36W / 2G11	EVG + Emergency 36W/1h	94-B-107	6,8 kg
MODULUX-E-EP 2x18W	320 x 320 x 80 mm	230V AC/DC	2x18W / 2G11	Electronic Ballast / EVG	94-B-53	2,0 kg
MODULUX-E-EP-DIM-10V 2x18W	320 x 320 x 80 mm	230V AC/DC	2x18W / 2G11	Electronic Dimmable 1-10V	94-B-125	2,0 kg
MODULUX-E-EP-DIM-DALI 2x18W	320 x 320 x 80 mm	230V AC/DC	2x18W / 2G11	Electronic Dimmable DALI	94-B-126	2,0 kg

\* RAL9003 = White colour surface treatment / povrchová úprava svietidla v bielej farbe

