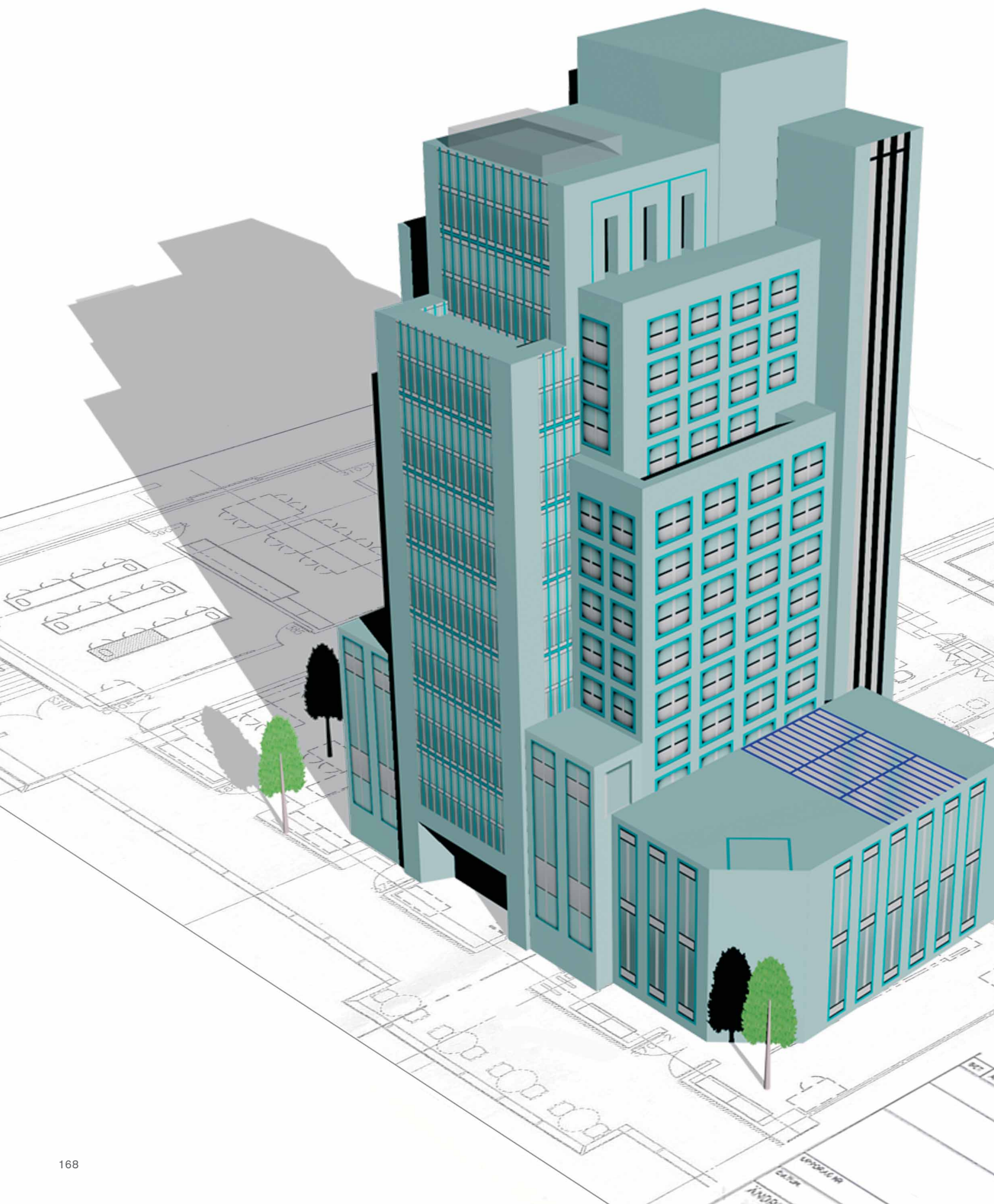


# CENTRALTEST



In case of large projects containing higher number of emergency lighting fixtures there is a possibility to check and control all of them from one point based on **ELMAX Centraltest device**. The ELMAX Centraltest checks, collects and control **all key data** from all connected individual emergency lighting fixtures. Each fixture has its own **address** so it is much easier to maintain and service the whole emergency lighting system. There is even the possibility to connect ELMAX Centraltest **to internet** (it has its own IP address) and thanks to this it is easy to gain the all important information in real time online from any place in the world.

Ak riešite projekt, kde je požadovaný **CENTRALTEST núdzový systém**, tak môžete s výhodou použiť **ELMAX Centraltest**, ktorý zbiera a riadi všetky individuálne **adresovateľné núdzové svietidlá** v budove z jedného centrálného bodu. ELMAX má svoju IP adresu, ktorá umožňuje jeho pripojenie **do siete internet** a tým diagnostiku bodový online z ktoréhokolvek miesta na zemi.



1

**ELMAX-LOOK-Mini ATXL**

- Wire based communication
- komunikácia po dvojlinke

2

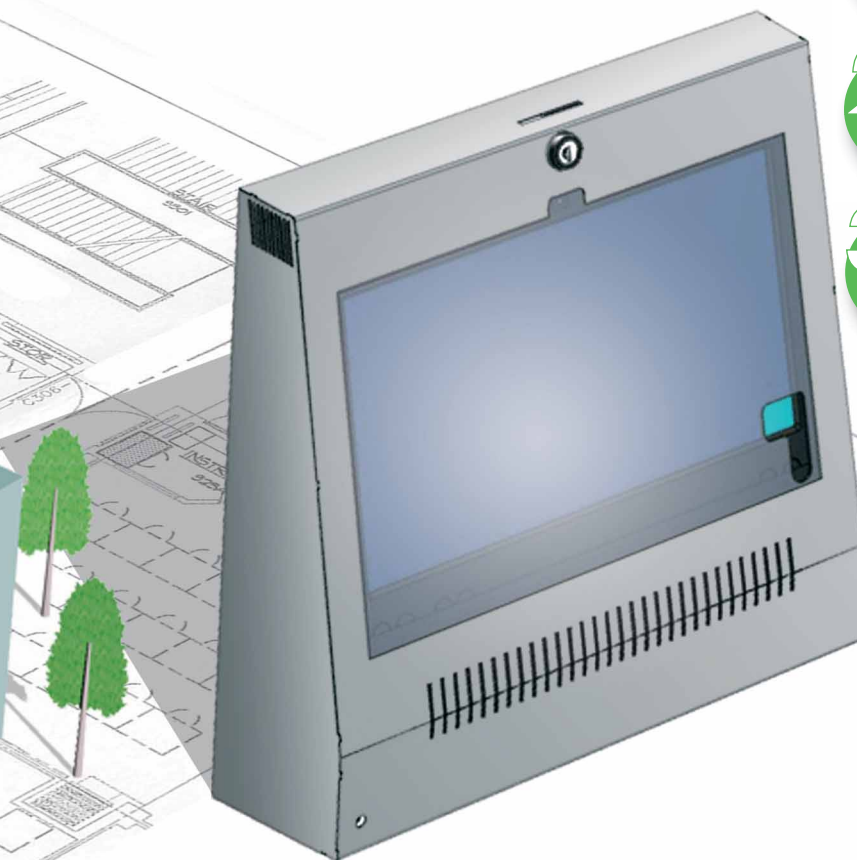
**ELMAX-WireLess-Mini ATZB**

- Wireless communication
- bezdrôtová komunikácia

3

**ELMAX-Patrolux-Mini ATPP**

- CBS + CentralTest
- CBS s centraltestom



Advanced Line View - 1

Addr	Name	Life	Burns	ACCU	Current	LS	PS	MT	AM	TS	Setup	LastT
7A0010	Lamp 3D	-	-	-	-	-	-	-	-	-	-	100
7A0012	Lamp 2	4200	91	4.68	110	0	0	0	0	0	0	0
7A0013	---	---	205	---	0	0	0	0	0	0	0	0
7A0014	---	---	121	---	0	0	0	0	0	0	0	0
709993	---	---	---	---	---	---	---	---	---	---	---	100

ELMAX Control Center (2.01)

Line	3	Total	1	2	3	4	5	6	7	8	9	10
Line - 1	5	2	1	1	1	3	0	0	0	0	0	0
Line - 2	1	1	0	0	0	0	0	0	0	0	0	0
Line - 3	1	1	0	0	0	0	0	0	0	0	0	0
Line - 4	1	1	0	0	0	0	0	0	0	0	0	0
Line - 5	3	2	0	0	0	0	0	0	0	0	0	0

Processing Line: 2  
Processing Lamp: 7C0010  
Com Port: COM 4  
External Alarm Input State: Passive  
Alarm Send Info: Not Sending

Last Short Test: 2/27/2019 9:22:30 PM  
Last Long Test: 4/6/2019 3:00:09 AM  
Planned Long Test: 4/7/2019 3:00:00 AM  
Mail Information: Disconnected  
Admin Section: Locked  
User Information: User None

4

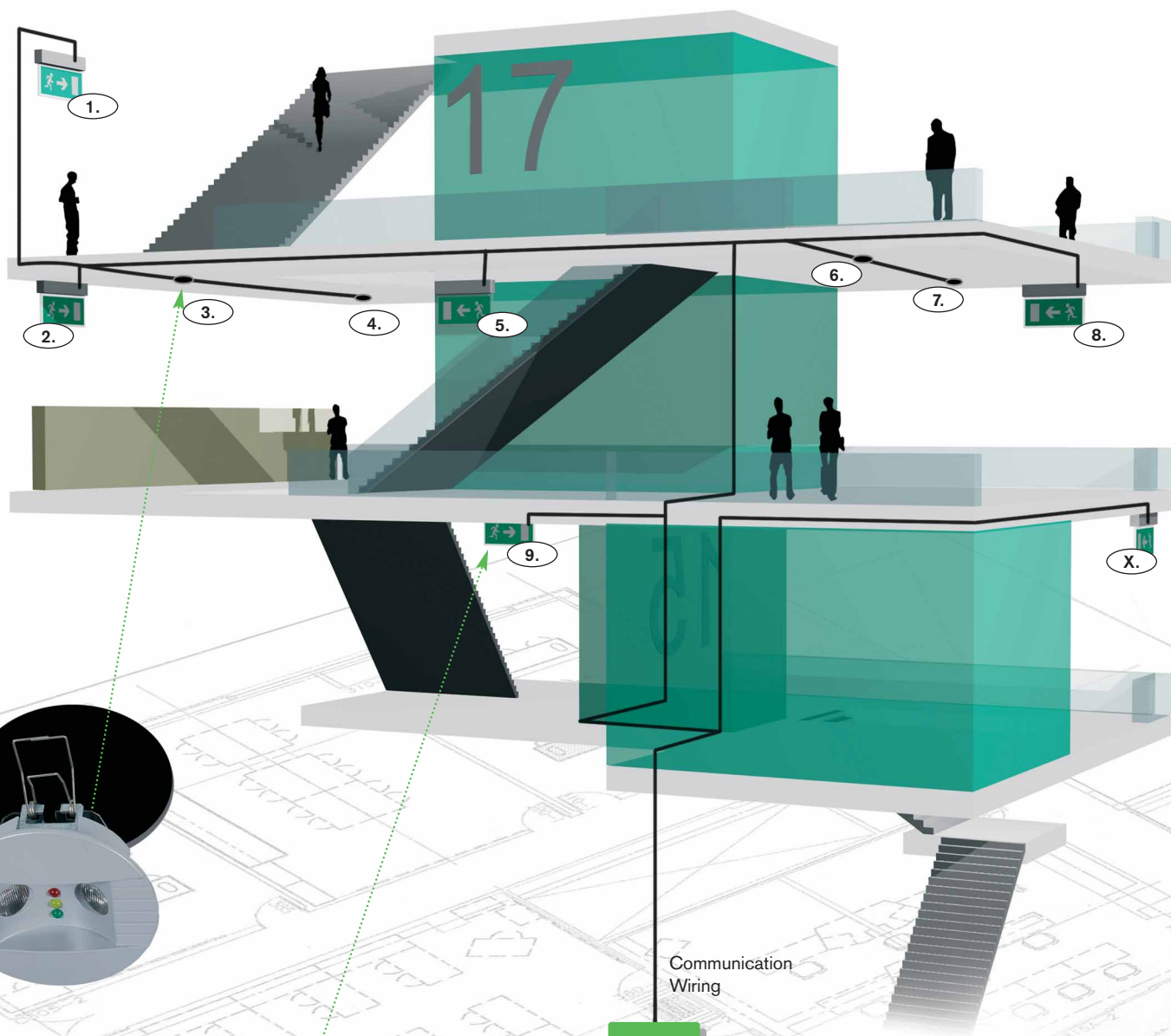
**Central Battery System (CBS)**

- Non-Addressable
- okruhový centrálny batériový systém



## ELMAX-LOOK Mini Centraltest

- Wire based Communication
- komunikácia po dvojlinke



„-ATXL“  
lighting  
fixtures

max.  
5x 100  
fixtures

ADDRESS  
KNOWN

Communication  
Wiring

max.  
2000m  
Long

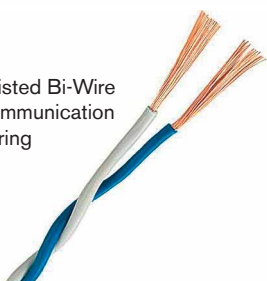
Twisted  
Bi-Wire  
Line

Internet  
WEB  
Control



ELMAX-Look Mini  
Centraltest  
Order Code: 164-B-19

Twisted Bi-Wire  
Communication  
Wiring





## ELMAX-Look MINI

It is low cost solution CENTRALTEST device suitable especially for smaller projects. There is no display in this version, so it must be connected to INTERNET (Ethernet) to be able to operate it through standard web browser on remote PC.

### Common features:

- The DIN rail mounting box, dimensions: 150 x 100 x 70mm
- Powered from AC 80..250V
- Built-in LINUX based operating system, with no additional licence fees
- ARMV6 processor unit
- Ethernet 10/100 standard RJ45 connector and DHCP client
- 2x USB type A input for additional devices: USB stick, dongles
- Optional WiFi 802.11 dongle available
- Optional 3G / 4G GSM dongle available
- Built-in WEB server as common GUI interface, in other words user can visit and control system over the INTERNET/Ethernet using standard WEB browser such as FireFox, IE, Opera, Chrome on a PC, tablet, Smartphone
- Email client for sending Email ALARMS or Notifications for service company or facility manager
- FTP client for collecting all information to two independent FTP servers
- 3x potential-free input for Fire Alarm, switching the Night Shining on and switching the Power Saving on.
- 1x output contact for messaging the Failure of fixtures or other malfunctions.
- Dedicated for fixtures series shown further in the catalogue as "-ATXL"
- 5x industrial RS485 line terminals, 1 line supports up to 100 fixtures
- Communication line length up to 2000m

## ELMAX-Look MINI

Jedná sa cenovo úsporný CENTRALTEST riadiaci panel, ktorý je určený pre monitoring núdzových svetidiel najmä v menších objektoch. Riadiaca jednotka nemá displej, takže je nutné pripojenie na INTERNET (Ethernet).

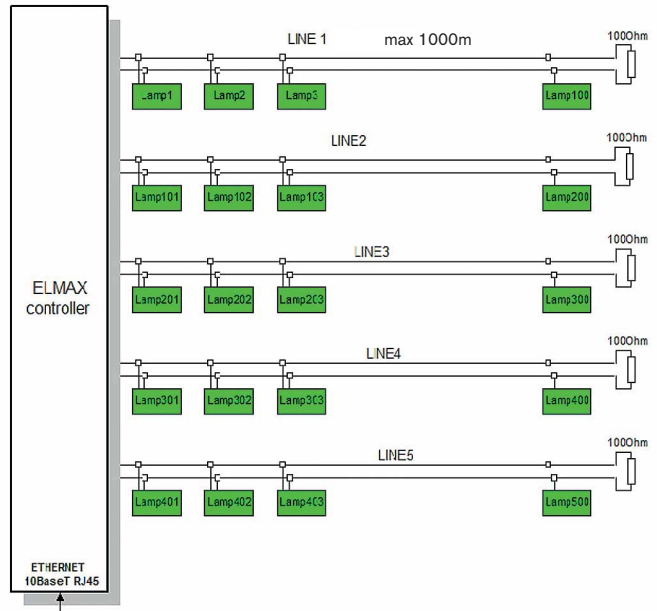
### Technická špecifikácia:

- Skrinka určená pre montáž na DIN lištu, rozmery: 150 x 100 x 70mm
- Napájanie AC 80..250V
- Zabudovaný operačný systém LINUX, nevyžadujú sa ďalšie licenčné poplatky
- ARMV6 procesor
- Ethernet 10/100 RJ45 konektor a DHCP klient
- 2x USB-A vstup pre pripojenie ďalších USB zariadení ako napr.:
  - príplatkový WiFi 802.11 USB modul
  - príplatkový 3G / 4G GSM USB modul
- Zabudovaný WEB server ako hlavné grafické rozhranie. Užívateľ môže jednoducho komunikovať cez INTERNET/Ethernet prostredníctvom prehliadača IE, CHROME, FireFox. Môže použiť PC, tablet, smart telefón
- Email klient pre odosielanie Email Alarmov / stav systému
- FTP klient pre odosielanie nazbieraných údajov zo systému
- 3x bezpotenciálový vstup pre požiarový alarm, zapnúť nočné svietenie alebo zapnúť úsporný režim.
- 1x výstupný kontakt ako spoločné hlásenie o chybe systému
- Určený pre svetidlá označené ďalej v katalógu ako "-ATXL"
- 5x RS485 vstupy, línia podporuje max. 100ks svetidiel
- Maximálna dĺžka línie do 2000m

TEST  
REPORT

Addr	Name	Life	Burns	ACCU	Current	LS	PS	MT	AM	TS	Setup	LastT
7A0010	Lamp 10	1000	91	4.68	110							100
7A0012	Lamp 12	1000	91	4.68	110							100
7A0013	Short Lamp Position on Schematic	200	0	0	0							0
7A0014	Short Lamp Position on Schematic	200	0	0	0							0
7D9933	Long Test on Selected Lamps	100	0	0	0							100

Line	Total	1	2	3	4	5	6	7	8	9	10
Line - 1	5	2	1	1	1	1	0	0	0	0	0
Line - 2	1	1	0	0	0	0	0	0	0	0	0
Line - 3	1	1	0	0	0	0	0	0	0	0	0
Line - 4	1	1	0	0	0	0	0	0	0	0	0
Line - 5	3	2	0	0	0	0	1	0	0	0	0



### ELMAX BENEFITS:

- **NO CENTRAL BATTERY = HIGHER SAFETY**  
(each lighting fixture in the system has its own battery and there is no risk that defect of one battery influences the whole system like in CBS case)
- **NO FIRE RESISTANT WIRING NEEDED = LOWER INVESTMENTS COSTS**  
(the project needs only 2 signal wires for communication, in case of emergency each lighting fixture is powered by its own battery)

### VÝHODY V POROVNANÍ S CENTRÁLNOU BATÉRIOU:

- **VYŠŠIA BEZPEČNOSŤ**  
(každé svetidlo má svoju vlastnú batériu, pri zlyhaní jedného nie je ohrozená funkčnosť celého systému ako pri centrálnej batériovej verzii)
- **NIE SÚ POTREBNÉ NEHORLAVÉ VODIČE**  
(pre napájanie svetidiel nie sú potrebné drahé nehorľavé vodiče, pretože svetidlo je napájané svojou vlastnou batériou v prípade výpadku elektrickej energie)
- **NIŽŠIE INVESTIČNÉ NÁKLADY A VYŠŠIA MIERA BEZPEČNOSTI NÚDZOVÉHO SYSTÉMU**